

## USER MANUAL

Dear customer, thank you for your purchase, please read the following instruction carefully before using the product.

### TECHNICAL DATA

Product name	Solar LED MHC 5W
Dimensions	217x149x34 mm
LED layout	30*SMD2835
Color temperature	4000K
Battery	Replaceable Li-ion; 3,7V / 3000mAh
Photovoltaic power	2.3Wp
Power consumption	5W
Luminous flux	500lm
Lighting angle	90°
Durability of lighting time	15 000 h
Tightness class	IP65
Angle range of panel movement	135°
Angle range of bracket movement	360°
Motion sensor detection area	Up to 6 m
Detection angle of motion sensor	120°
Warranty	24 months (12 months for battery)

### PRODUCT FEATURES:



Solar powered



Automatic on/off light switching



2 modes of operation



Replaceable battery



Multifunctional



Zero electricity cost



PIR motion sensor



IP65 protection class

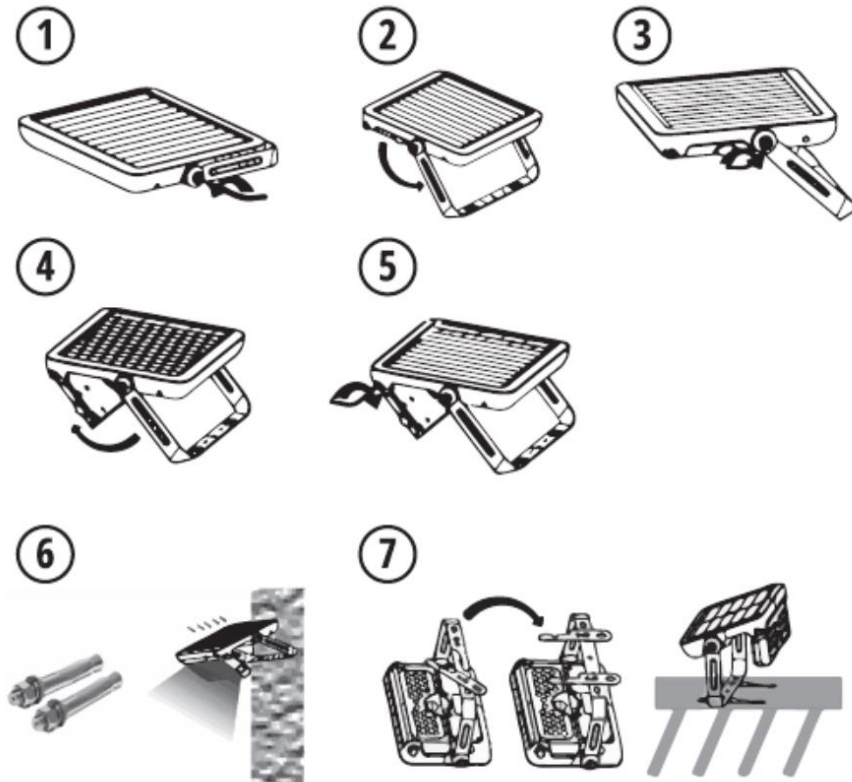


Cordless



Long lasting

## INSTALLATION



1. Prepare floodlight and necessary assembly tools.
2. With an appropriate key loosen the screws that limit the movement of the bracket on both sides (1). Drill holes (diameter: 8 mm) in the mounting base for the base of the bracket and select the right angle for it (2), then screw the bracket to the ground with the screws (3).
3. Choose the right position of the solar panel by adjusting its inclination angle (4) and confirm it by tightening the previously loosened screws with the appropriate key (5).
4. The panel can be mounted on a flat vertical surface (6) or with usage of support legs to a flat horizontal surface (7).

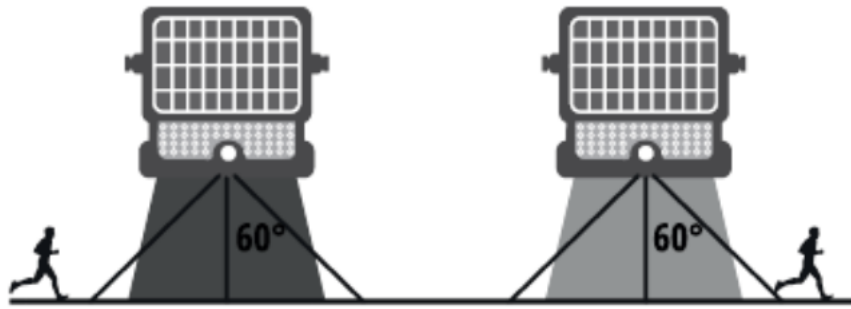
## MODE OF OPERATION:

**The sensor mode of operation is programmed so that the floodlight activates after dusk and deactivates during the dawn.** The sensor operating mode is activated by a white power button. This button is located under the panel of the LED module, and the place of its occurrence is distinguished by the green circle in Figure 8.

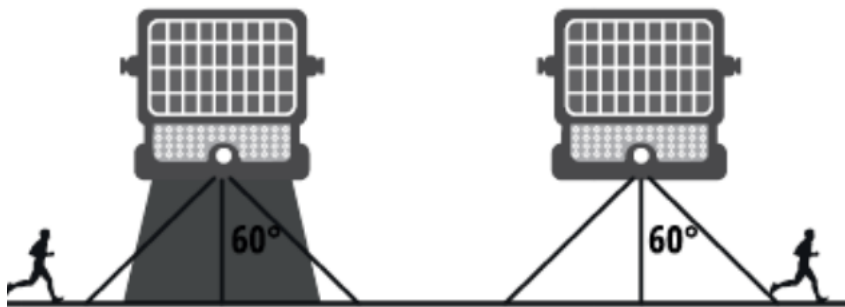


Fig. 8. The location of the power button.

### SENSOR OPERATION MODE (SINGLE PRESS OF THE POWER BUTTON):

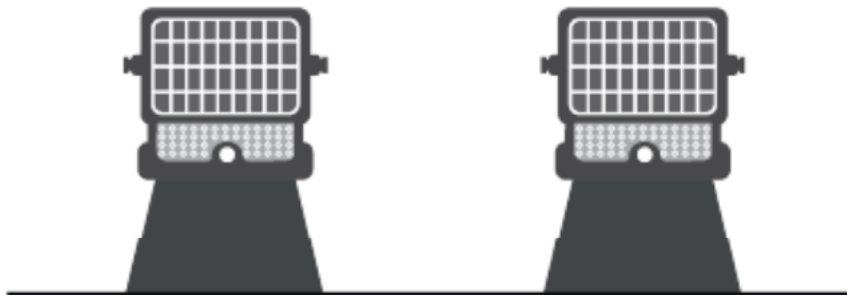


If the maximum battery level is **more than 30%**, then when the movement is detected (up to 6 m), the floodlight automatically lights up with full (100%) power. Then after 20 seconds of no motion detection, the light power value switches to 3% of the maximum value.



If the maximum battery level is **less than 30%**, then when the movement is detected (up to 6m), the floodlight automatically lights up with full (100%) power. Then turns off the lighting source after 20 seconds of no motion detection.

### CONSTANT LIGHTING MODE (PRESS AND HOLD THE POWER BUTTON FOR 3 SECONDS UNTIL THE LED MODULE FLASHES):



After activation, the motion and light sensors remain switched off, and the floodlight automatically lights up to 100% of maximum power for the entire duration of the mode, until the battery runs out – which will cause switching back to sensor operation mode.

### TECHNICAL NOTES:

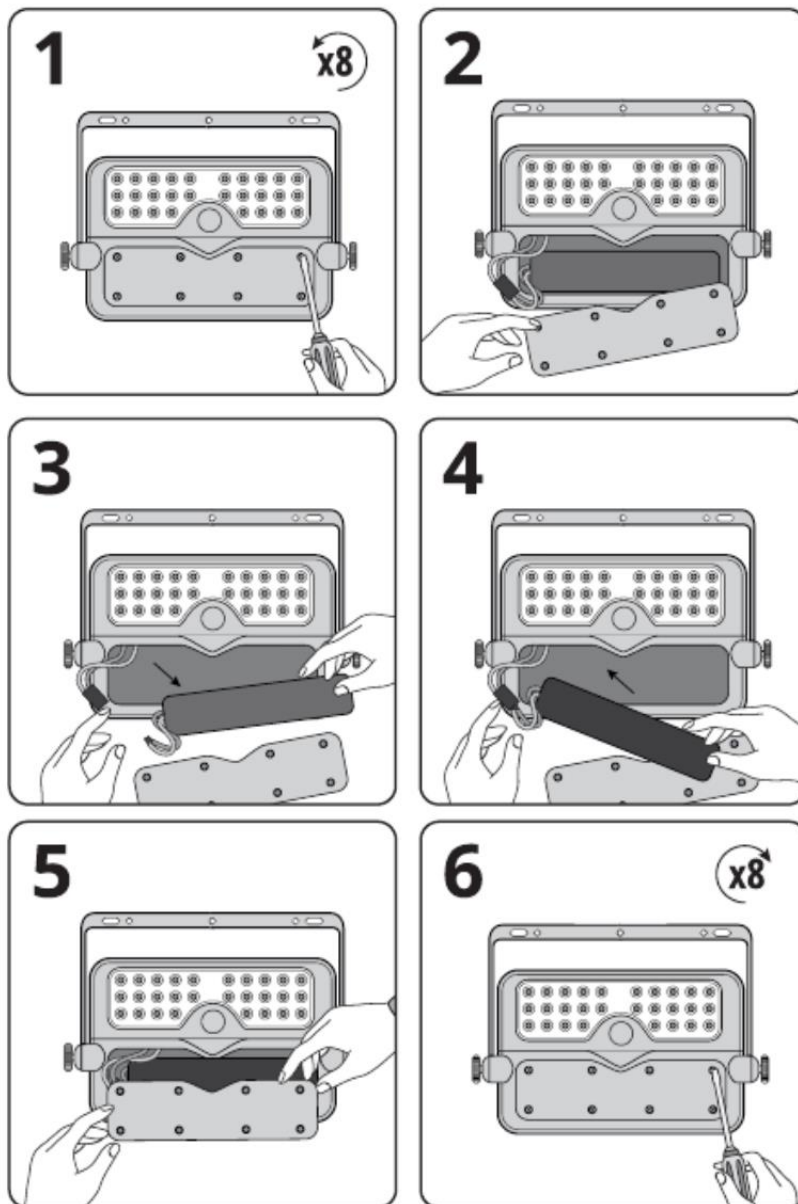
1. Please note that there is very little risk of battery explosion due to its lithium-ion construction.
2. The solar panel should be placed in a place where it absorbs enough sunlight.
3. Please note that the maximum lighting time of the LED floodlight will vary depending on the time of absorption and the intensity of sunlight.
4. The floodlight automatically switches on at dusk (unless it is turned off remotely with Off button by the user).
5. The recommended installation height should be 3-4 m higher than the given reference point (e.g., 3 m above the ground).

6. The floodlight is equipped with an internal, replaceable battery. If you need to replace it, please contact the seller to choose the correct one.
7. In order to activate the floodlight after replugging battery, place the solar panel to the direction of sunlight.

#### USAGE NOTE:

1. It is not allowed to use a different solar module that the one that is originally included with the floodlight. Any changes related to this may result in personal injury and will invalidate the product's warranty.
2. Remember to clean the motion sensor from dust and sediment with a damp cloth from time to time.
3. It is also recommended to periodically clean the solar module shell. A dirty cell can reduce photovoltaic efficiency.
4. In both cases, in order to avoid discoloration on the casing, do not use strong cleaning agents, e.g., Alcohol-based.

#### BATTERY REPLACEMENT



**UTILIZATION:**

In accordance to European Directive 2012/19/EU regarding electrical and electronic equipment, the WEEE with label such indicates label, you can get a penalty separate of fine, because it cannot be thrown out into electrical ordinary and electronic garbage together with products of other waste. These products may be harmful to the natural environment and human health, it requires a special form of treatment / recovery / recycling / disposal. You can find out about the utilization possibilities of a worn out device in the appropriate city or commune office.